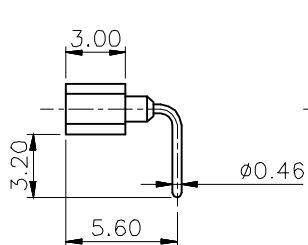
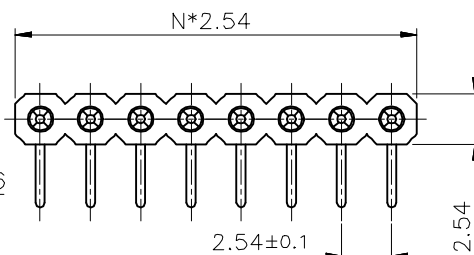


Dual rows



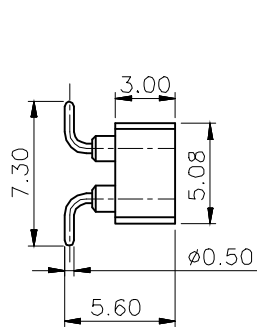
Single row



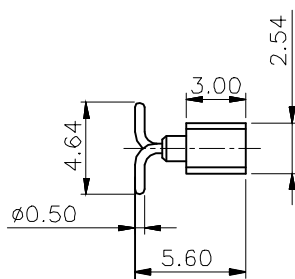
R/A TYPE

SPECIFICATIONS

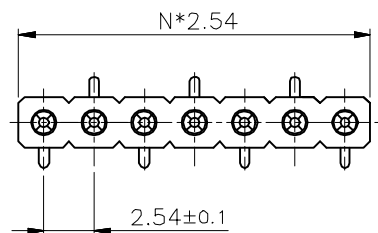
Current Rating: 3.0 Amp
 Contact Resistance: 10m Ω Max
 Dielectric Strength: Min 1000 V
 Mechanical Life: Min 500 cycles
 Operation Temperature: -40 $^{\circ}$ C~105 $^{\circ}$ C
 Sleeve Material: Brass CuZn36Pb3 (C36000),
 Contact Plating: Au or Sn over Ni
 Insulator Material: PPS+30%G.F (UL94V-0)



Dual rows



Single row



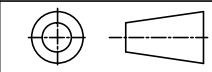
SMT TYPE

| PIN Number | Dimension (mm) | | PIN Number | Dimension (mm) | |
|------------|----------------|-------|------------|----------------|--------|
| | A | B | | A | B |
| 1*1P | | 2.54 | 1*21P | 50.80 | 53.34 |
| 1*2P | 2.54 | 5.08 | 1*22P | 53.34 | 55.88 |
| 1*3P | 5.08 | 7.62 | 1*23P | 55.88 | 58.42 |
| 1*4P | 7.62 | 10.16 | 1*24P | 58.42 | 60.96 |
| 1*5P | 10.16 | 12.70 | 1*25P | 60.96 | 63.50 |
| 1*6P | 12.70 | 15.24 | 1*26P | 63.50 | 66.04 |
| 1*7P | 15.24 | 17.78 | 1*27P | 66.04 | 68.58 |
| 1*8P | 17.78 | 20.32 | 1*28P | 68.58 | 71.12 |
| 1*9P | 20.32 | 22.86 | 1*29P | 71.12 | 73.66 |
| 1*10P | 22.86 | 25.40 | 1*30P | 73.66 | 76.20 |
| 1*11P | 25.40 | 27.94 | 1*31P | 76.20 | 78.74 |
| 1*12P | 27.94 | 30.48 | 1*32P | 78.74 | 81.28 |
| 1*13P | 30.48 | 33.02 | 1*33P | 81.28 | 83.82 |
| 1*14P | 33.02 | 35.56 | 1*34P | 83.82 | 86.36 |
| 1*15P | 35.56 | 38.10 | 1*35P | 86.36 | 88.90 |
| 1*16P | 38.10 | 40.64 | 1*36P | 88.90 | 91.44 |
| 1*17P | 40.64 | 43.18 | 1*37P | 91.44 | 93.98 |
| 1*18P | 43.18 | 45.72 | 1*38P | 93.98 | 96.52 |
| 1*19P | 45.72 | 48.26 | 1*39P | 96.52 | 99.06 |
| 1*20P | 48.26 | 50.80 | 1*40P | 99.06 | 101.60 |



Recommended P.C.B Layout (Top Side)
 (PCB BOARD TOLERANCE ± 0.05)

Any size and shape can be customized.
 Contact sales team for more information.



| PRODUCT NAME | DIM | TOL | DWG NO. | DRAW | Wu | PART NO | CUST |
|--------------------------------------|-------|-----------------|---------|-------|-------|----------|------------|
| 2.54MM Machined Female Header Series | X.X | ± 0.4 | P.W | CHECK | Tomy | UNIT | DATE |
| | X.XX | ± 0.25 | MATER | APPR | Allan | MM[INCH] | XXXX.XX.XX |
| | ANGLE | $\pm 3^{\circ}$ | REV. | | | | |

win 东莞市同盈电子有限公司
 DONGGUAN WIN-WIN ELECTRONIC Co., Ltd.