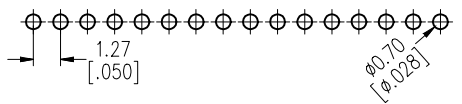
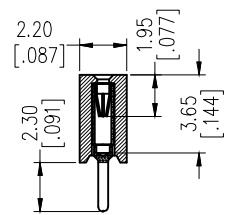
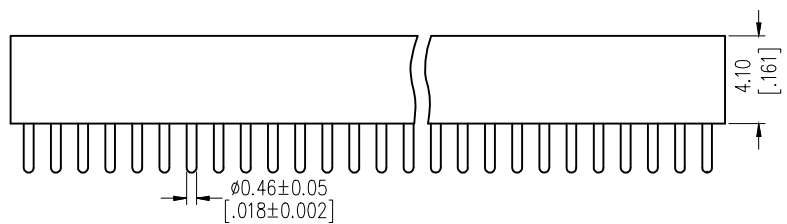
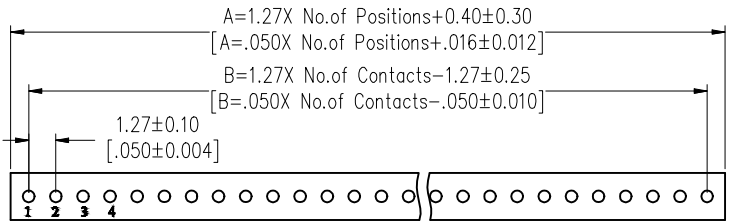




SPECIFICATIONS

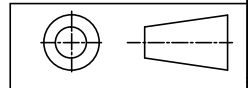
Current Rating: 1.0 Amp  
 Contact Resistance: 10mΩ Max  
 Dielectric Strength: Min 1000 V  
 Mechanical Life: Min 500 cycles  
 Operation Temperature: -40°C~105°C  
 Sleeve Material: Brass CuZn36Pb3 (C36000),  
 Contact Plating: Au or Sn over Ni  
 Insulator Material: PPS+30%G.F (UL94V-0)



Recommended P.C.B Layout (Top Side)  
 (PCB BOARD TOLERANCE ±0.05)

PIN Number	Dimension (mm)		PIN Number	Dimension (mm)	
	A	B		A	B
1*2P	1.27	2.94	1*27P	33.02	34.69
1*3P	2.54	4.21	1*28P	34.29	35.96
1*4P	3.81	5.48	1*29P	35.56	37.23
1*5P	5.08	6.75	1*30P	36.83	38.50
1*6P	6.35	8.02	1*31P	38.10	39.77
1*7P	7.62	9.29	1*32P	39.37	41.04
1*8P	8.89	10.56	1*33P	40.64	42.31
1*9P	10.16	11.83	1*34P	41.91	43.58
1*10P	11.43	13.10	1*35P	43.18	44.85
1*11P	12.70	14.37	1*36P	44.45	46.12
1*12P	13.97	15.64	1*37P	45.72	47.39
1*13P	15.24	16.91	1*38P	46.99	48.66
1*14P	16.51	18.18	1*39P	48.26	49.93
1*15P	17.78	19.45	1*40P	49.53	51.20
1*16P	19.05	20.72	1*41P	50.80	52.47
1*17P	20.32	21.99	1*42P	52.07	53.74
1*18P	21.59	23.26	1*43P	53.34	55.01
1*19P	22.86	24.53	1*44P	54.61	56.28
1*20P	24.13	25.80	1*45P	55.88	57.55
1*21P	25.40	27.07	1*46P	57.15	58.82
1*22P	26.67	28.34	1*47P	58.42	60.09
1*23P	27.94	29.61	1*48P	59.69	61.36
1*24P	29.21	30.88	1*49P	60.96	62.63
1*25P	30.48	32.15	1*50P	62.23	63.90
1*26P	31.75	33.42			

Any size and shape can be customized.  
 Contact sales team for more information.



PRODUCT NAME	DIM	TOL	DWG NO.	DRAW	Wu	PART NO	CUST
1.27MM Machined Female Header Series	X.X	±0.4	P.W	CHECK	Tomy	UNIT	DATE
	X.XX	±0.25	MATER	PPS、BRASS	Allan	MM[INCH]	XXXX.XX.XX
	ANGLE	±3°	REV.	A0		东莞市同盈电子有限公司 DONGGUAN WIN-WIN ELECTRONIC Co.,Ltd.	