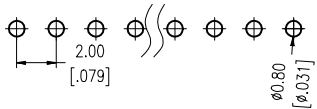
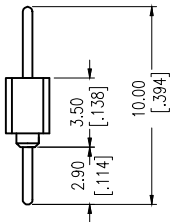
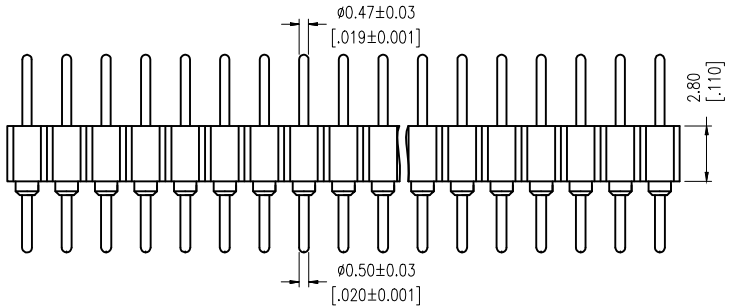
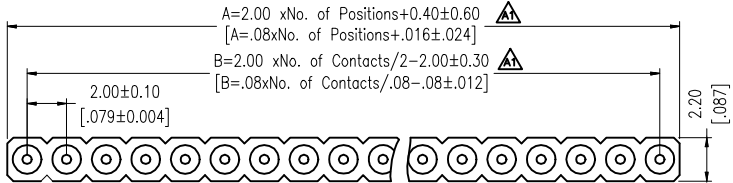




Specification

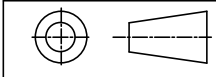
Current Rating: 2.0Amp  
 Contact Resistance: 10mΩ Max  
 Dielectric Strength: Min 1000 V  
 Mechanical Life: Min 500 cycles  
 Operation Temperature: -40°C ~ 105°C  
 Sleeve Material: Brass CuZn36Pb3 (C36000)  
 Contact Plating: Au or Sn over Ni  
 Insulator Material: PPS+30%G.F (UL94V-0)



Recommended P.C.B Layout (Top Side)  
 (PCB BOARD TOLERANCE ± 0.05)

| PIN Number | Dimension (mm) |       | PIN Number | Dimension (mm) |       |
|------------|----------------|-------|------------|----------------|-------|
|            | A              | B     |            | A              | B     |
| 1X1P       | .....          | 2.00  | 1X21P      | 40.00          | 42.00 |
| 1X2P       | 2.00           | 4.00  | 1X22P      | 42.00          | 44.00 |
| 1X3P       | 4.00           | 6.00  | 1X23P      | 44.00          | 46.00 |
| 1X4P       | 6.00           | 8.00  | 1X24P      | 46.00          | 48.00 |
| 1X5P       | 8.00           | 10.00 | 1X25P      | 48.00          | 50.00 |
| 1X6P       | 10.00          | 12.00 | 1X26P      | 50.00          | 52.00 |
| 1X7P       | 12.00          | 14.00 | 1X27P      | 52.00          | 54.00 |
| 1X8P       | 14.00          | 16.00 | 1X28P      | 54.00          | 56.00 |
| 1X9P       | 16.00          | 18.00 | 1X29P      | 56.00          | 58.00 |
| 1X10P      | 18.00          | 20.00 | 1X30P      | 58.00          | 60.00 |
| 1X11P      | 20.00          | 22.00 | 1X31P      | 60.00          | 62.00 |
| 1X12P      | 22.00          | 24.00 | 1X32P      | 62.00          | 64.00 |
| 1X13P      | 24.00          | 26.00 | 1X33P      | 64.00          | 66.00 |
| 1X14P      | 26.00          | 28.00 | 1X34P      | 66.00          | 68.00 |
| 1X15P      | 28.00          | 30.00 | 1X35P      | 68.00          | 70.00 |
| 1X16P      | 30.00          | 32.00 | 1X36P      | 70.00          | 72.00 |
| 1X17P      | 32.00          | 34.00 | 1X37P      | 72.00          | 74.00 |
| 1X18P      | 34.00          | 36.00 | 1X38P      | 74.00          | 76.00 |
| 1X19P      | 36.00          | 38.00 | 1X39P      | 76.00          | 78.00 |
| 1X20P      | 38.00          | 40.00 | 1X40P      | 78.00          | 80.00 |

Any size and shape can be customized.  
 Contact sales team for more information.



|                                  |       |       |         |            |       |           |            |
|----------------------------------|-------|-------|---------|------------|-------|-----------|------------|
| PRODUCT NAME                     | DIM   | TOL   | DWG NO. | DRAW       | Wu    | PART NO   | CUST       |
| 2.0MM Machined Pin Header Series | X.X   | ±0.4  | P.W     | CHECK      | Tomy  | UNIT      | DATE       |
|                                  | X.XX  | ±0.25 | MATER   | PPS, BRASS | Allan | MM [INCH] | XXXX.XX.XX |
|                                  | ANGLE | ±3°   | REV.    | AO         |       |           |            |

**win** 东莞市同盈电子有限公司  
 DONGGUAN WIN-WIN ELECTRONIC Co., Ltd.