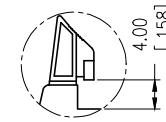


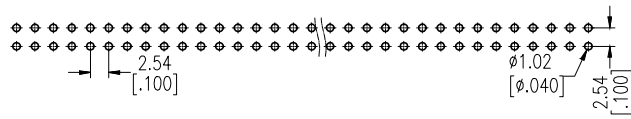
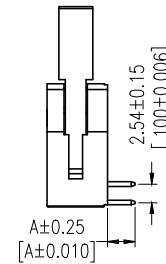
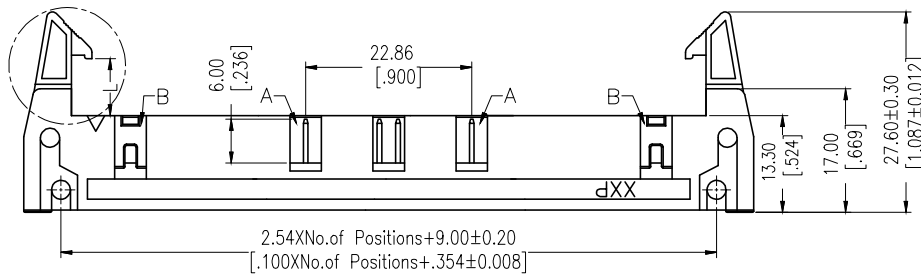
Long Latch



Short Latch

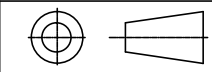
SPECIFICATIONS

- Current Rating: 3Amp
- Contact Resistance: 20mΩ Max
- Withstand Voltage: 1000V AC/DC
- Insulation Resistance: 1000MΩ Min
- Operation Temperature: -40°C~105°C
- Contact Material: Brass
- Contact Plating: Au or Sn over Ni
- Insulation Material: PA9T+30GF (UL94V-0)



Recommended P.C.B Layout(Top Side)
(PCB BOARD TOLERANCE±0.05)

Any size and shape can be customized.
Contact sales team for more information.



PRODUCT NAME	DIM	TOL	DWG NO.	DRAW	Wu	PART NO	CUST
2.54MM EJECTOR HEADER SERIES	X. X	±0.4	P. W	CHECK	Tomy	UNIT	MM[INCH]
	X. XX	±0.25	MATER	APPR	Allan	DATE	XXXX. XX. XX
	ANGLE	±3°	REV.				



东莞市同盈电子有限公司
DONGGUAN WIN-WIN ELECTRONIC Co., Ltd.