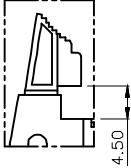
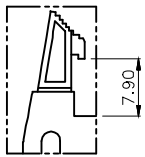
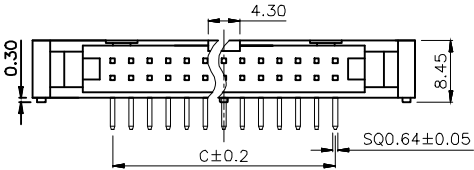




**SPECIFICATIONS**

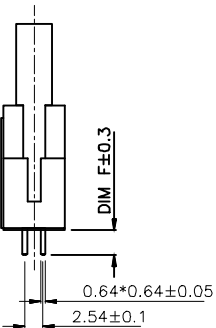
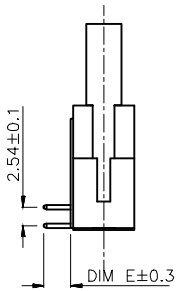
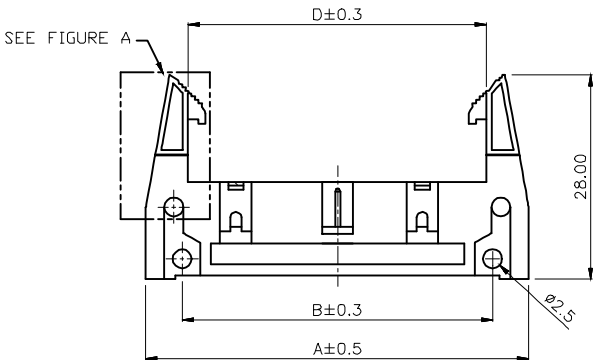
Current Rating: 3Amp  
 Contact Resistance: 20mΩ Max  
 Withstand Voltage: 1000V AC/DC  
 Insulation Resistance: 1000MΩ Min  
 Operation Temperature: -40°C~105°C  
 Contact Material: Brass  
 Contact Plating: Au or Sn over Ni  
 Insulation Material: PA9T+30GF(UL94V-0)



STANDARD LATCH

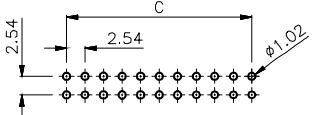
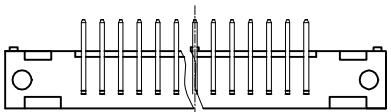
SPECIAL LATCH

FIGURE A



R/A TYPE

V/T TYPE



RECOMMEND PCB LAYOUT  
(TOLERANCE ±0.05)

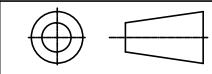
R/A TYPE

Latch Type	DIM. E
Standard Latch	3.70

V/T TYPE

Latch Type	DIM. F
Standard Latch	3.10
Standard Latch	8.10

Any size and shape can be customized.  
 Contact sales team for more information.



PRODUCT NAME <b>2.54MM EJECTOR HEADER SERIES</b>	DIM	TOL	DWG NO.	DRAW	Wu	PART NO	CUST
	X.X	±0.4	P.W	CHECK	Tomy	UNIT	DATE
	X.XX	±0.25	MATER	APPR	Allan	MM[INCH]	XXXX.XX.XX
	ANGLE	±3°	REV.			东莞市同盈电子有限公司 DONGGUAN WIN-WIN ELECTRONIC Co., Ltd.	