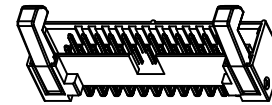
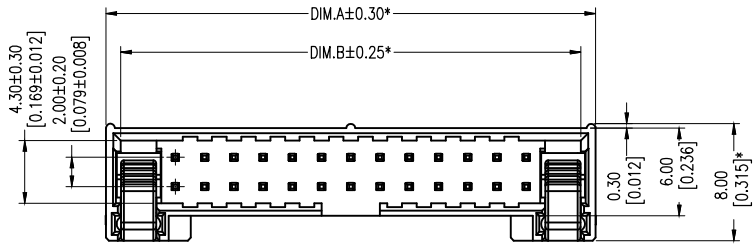


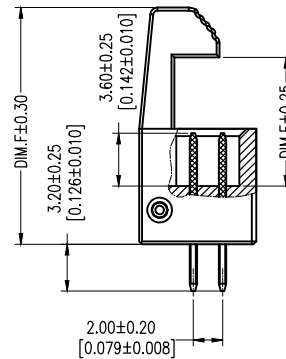
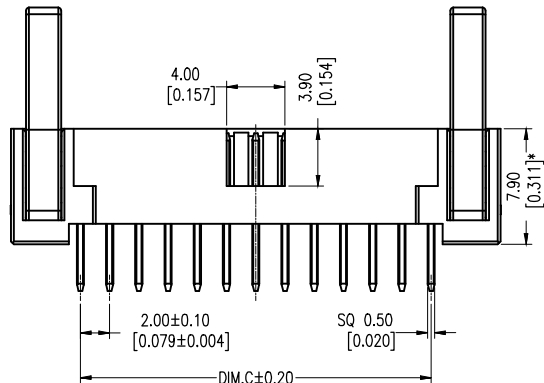


SPECIFICATIONS

Current Rating: 2Amp
 Contact Resistance: 20mΩ Max
 Withstand Voltage: 500V AC/DC
 Insulation Resistance: 1000MΩ Min
 Operation Temperature: -40°C~105°C
 Contact Material: Brass
 Contact Plating: Au or Sn over Ni
 Insulation Material: PA9T+30GF(UL94V-0)

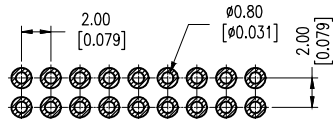


3D VIEW(REF.)
SCALE 1:2



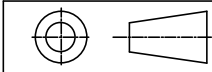
PART NO.	DIM.E	DIM.F
3223-XXSXXBLX1	13.10	20.50
3223-XXSXXBSX1	8.80	16.20

No. Of POSITION	DIM.A	DIM.B	DIM.C
10	17.50	15.50	8.00
12	19.50	17.50	10.00
14	21.50	19.50	12.00
16	23.50	21.50	14.00
20	27.50	25.50	18.00
22	29.50	27.50	20.00
24	31.50	29.50	22.00
26	33.50	31.50	24.00
30	37.50	35.50	28.00
34	41.50	39.50	32.00
40	47.50	45.50	38.00
44	51.50	49.50	42.00
48	55.50	53.50	46.00
50	57.50	55.50	48.00
68	75.50	73.50	66.00



Recommended P.C.B Layout (Top Side)
(PCB BOARD TOLERANCE±0.05)

Any size and shape can be customized.
 Contact sales team for more information.



PRODUCT NAME	DIM	TOL	DWG NO.	DRAW	Wu	PART NO	CUST
2. OMM EJECTOR HEADER SERIES	X. X	±0.4	P. W	CHECK	Tomy	UNIT	DATE XXXX.XX.XX
	X. XX	±0.25	MATER PA9T、BRASS	APPR	Allan	东莞市同盈电子有限公司 DONGGUAN WIN-WIN ELECTRONIC Co., Ltd.	
	ANGLE	±3°	REV. AO				