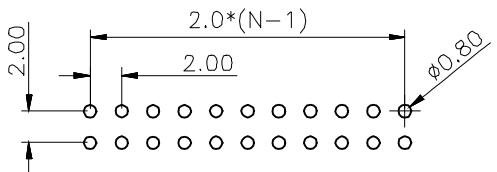
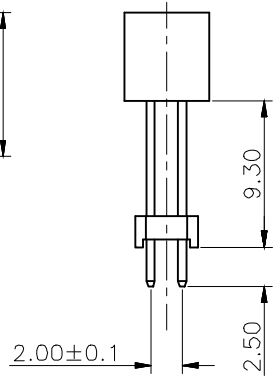
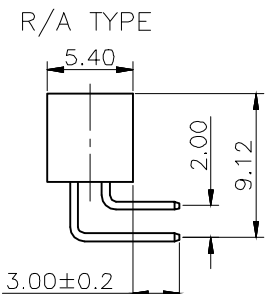
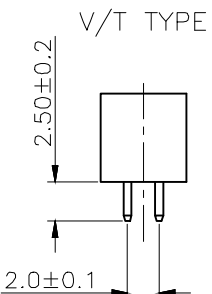
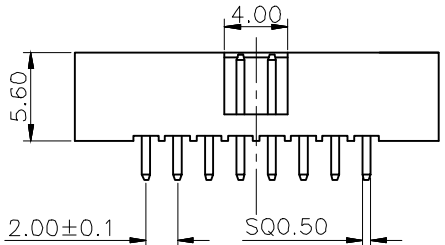
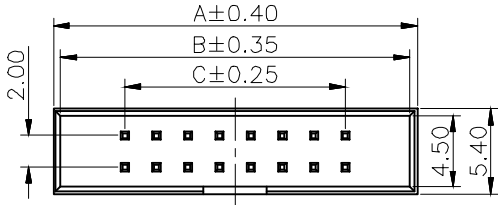




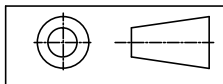
SPECIFICATIONS

Current Rating: 2Amp
 Contact Resistance: 20mΩ Max
 Withstand Voltage: 500V AC/DC
 Insulation Resistance: 1000MΩ Min
 Operation Temperature: -40°C~105°C
 Contact Material: Brass
 Contact Plating: Au or Sn over Ni
 Insulation Material: PA9T+30GF(UL94V-0)



RECOMMEND PCB LAYOUT
(TOLERANCE=±0.05)

Any size and shape can be customized.
 Contact sales team for more information.



PRODUCT NAME	DIM	TOL	DWG NO.	DRAW	Wu	PART NO	CUST
2.0MM BOX HEADER SERIES	X.X	±0.4	P.W	CHECK	Tomy	UNIT	DATE
	X.XX	±0.25	MATER PA9T、BRASS	APPR	Allan	MM[INCH]	XXXX.XX.XX
	ANGLE	±3°	REV. A0	东莞市同盈电子有限公司 DONGGUAN WIN-WIN ELECTRONIC Co., Ltd.			