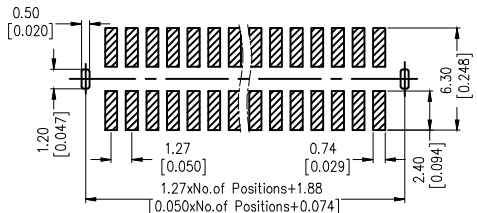
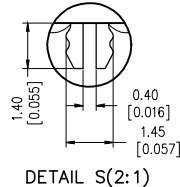
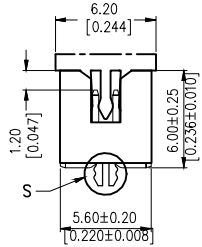
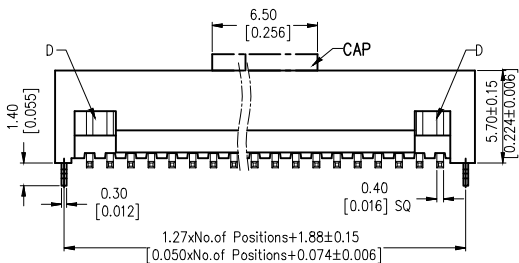
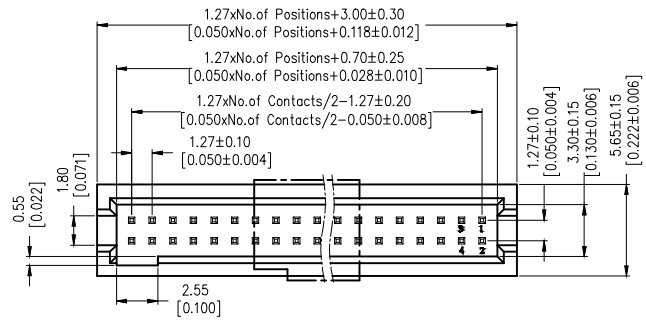




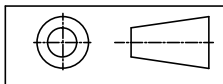
SPECIFICATIONS

Current Rating: 1Amp
 Contact Resistance: 20mΩ Max
 Withstand Voltage: 500V AC/DC
 Insulation Resistance: 1000MΩ Min
 Operation Temperature: -40°C~105°C
 Contact Material: Brass
 Contact Plating: Au or Sn over Ni
 Insulation Material: PA9T+30GF(UL94V-0)



Recommended P.C.B Layout (Top Side)
 (PCB BOARD TOLERANCE ±0.05)

Any size and shape can be customized.
 Contact sales team for more information.



PRODUCT NAME	DIM	TOL	DWG NO.	DRAW	Wu	PART NO	CUST
1. 27MM BOX HEADER SERIES	X. X	±0.4	P. W	CHECK	Tomy	UNIT	DATE
	X. XX	±0.25	MATER	APPR	Allan	MM[INCH]	XXXX. XX. XX
	ANGLE	±3°	REV.				

win 东莞市同盈电子有限公司
 DONGGUAN WIN-WIN ELECTRONIC Co., Ltd.