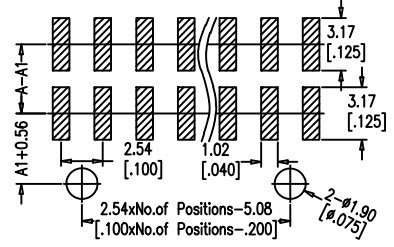
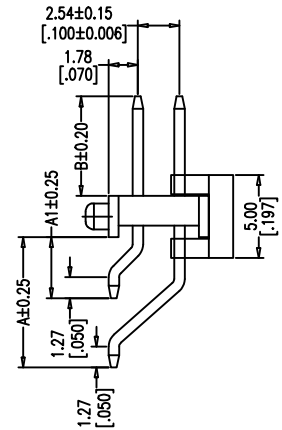
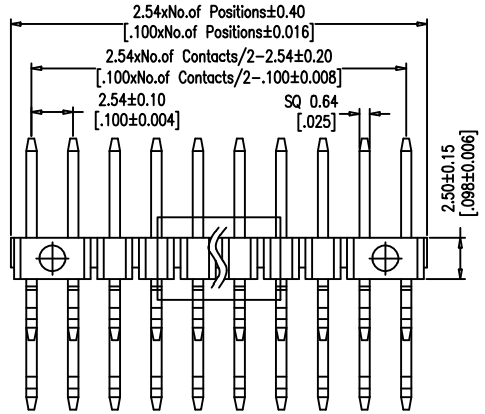
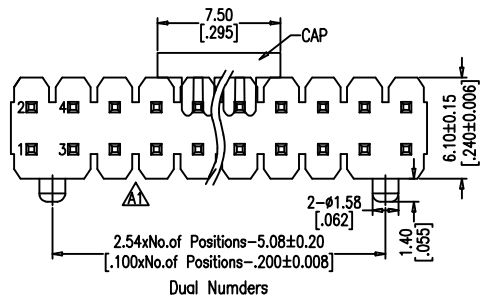


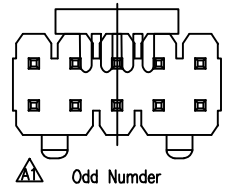


SPECIFICATIONS

Current Rating: 3.0 AMP
 Contact Resistance: 20mΩ Max.
 Withstand Voltage: AC/DC 500V
 Insulator Resistance: 1000 MΩ Min
 Operating Temp.: -40°C ~ +105°C
 Contact Material: Brass
 Contact Plating: Au or Sn over Ni
 Insulator Material: PA6T Black+30%GF UL94V-0 BK

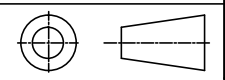


Recommended P.C.B Layout (Top Side)
 (PCB BOARD TOLERANCE±0.05)



Any size and shape can be customized.
 Contact sales team for more information.

PIN Number	Dimension(mm)		PIN Number	Dimension(mm)	
	A	B		A	B
2×1P	Ø	Ø	2×21P	50.80	53.34
2×2P	2.54	5.08	2×22P	53.34	55.88
2×3P	5.08	7.62	2×23P	55.88	58.42
2×4P	7.62	10.16	2×24P	58.42	60.96
2×5P	10.16	12.70	2×25P	60.96	63.50
2×6P	12.70	15.24	2×26P	63.50	66.04
2×7P	15.24	17.78	2×27P	66.04	68.58
2×8P	17.78	20.32	2×28P	68.58	71.12
2×9P	20.32	22.86	2×29P	71.12	73.66
2×10P	22.86	25.40	2×30P	73.66	76.20
2×11P	25.40	27.94	2×31P	76.20	78.74
2×12P	27.94	30.48	2×32P	78.74	81.28
2×13P	30.48	33.02	2×33P	81.28	83.82
2×14P	33.02	35.56	2×34P	83.82	86.36
2×15P	35.56	38.10	2×35P	86.36	88.90
2×16P	38.10	40.64	2×36P	88.90	91.44
2×17P	40.64	43.18	2×37P	91.44	93.98
2×18P	43.18	45.72	2×38P	93.98	96.52
2×19P	45.72	48.26	2×39P	96.52	99.06
2×20P	48.26	50.80	2×40P	99.06	101.60



PRODUCT NAME	DIM	TOL	DWG NO.	DRAW	Wu	PART NO	CUST
2.54 MM DOUBLE ROW PIN HEADER SERIES	X. X	±0.4	P. W	CHECK	Tomy	UNIT	DATE
	X. XX	±0.25	MATER PA6T、BRASS	APPR	Allan	MM[INCH]	XXXX. XX. XX
	ANGLE	±3°	REV. AO	东莞市同盈电子有限公司 DONGGUAN WIN-WIN ELECTRONIC Co.,Ltd.			