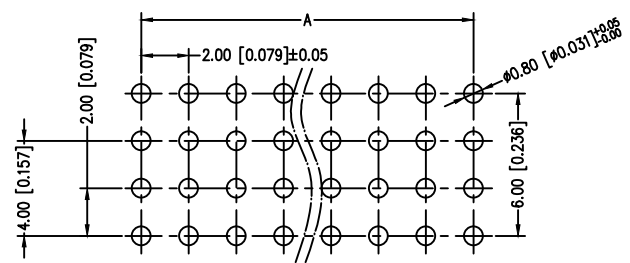
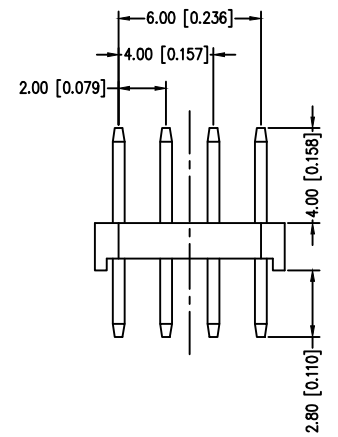
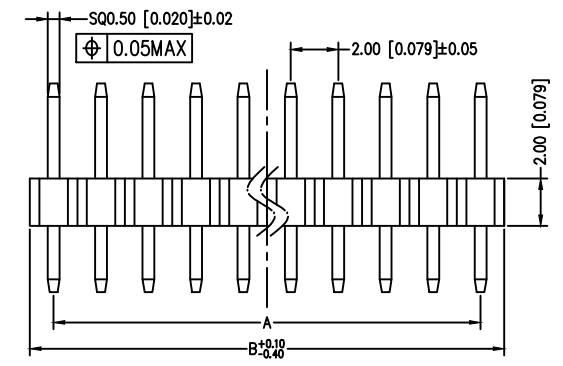
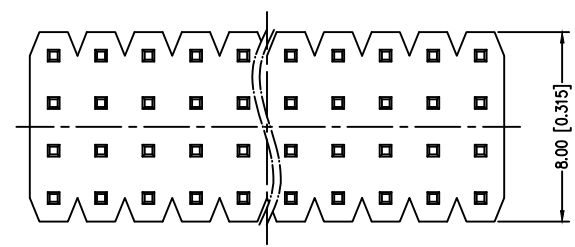




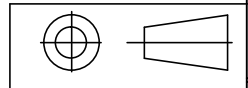
SPECIFICATIONS
 Current Rating: 2.0 AMP
 Contact Resistance: 20mΩ Max.
 Withstand Voltage: AC/DC 500V
 Insulator Resistance: 1000 MΩ Min
 Operating Temp.: -40°C ~ +105°C
 Contact Material: Brass
 Contact Plating: Au or Sn over Ni
 Insulator Material: PA6T Black+30%GF UL94V-0 BK



Recommended P.C.B Layout

Any size and shape can be customized.
 Contact sales team for more information.

PIN Number	Dimension (mm)		PIN Number	Dimension (mm)	
	A	B		A	B
4*1P	2.00	4*21P	40.00	42.00
4*2P	2.00	4.00	4*22P	42.00	44.00
4*3P	4.00	6.00	4*23P	44.00	46.00
4*4P	6.00	8.00	4*24P	46.00	48.00
4*5P	8.00	10.00	4*25P	48.00	50.00
4*6P	10.00	12.00	4*26P	50.00	52.00
4*7P	12.00	14.00	4*27P	52.00	54.00
4*8P	14.00	16.00	4*28P	54.00	56.00
4*9P	16.00	18.00	4*29P	56.00	58.00
4*10P	18.00	20.00	4*30P	58.00	60.00
4*11P	20.00	22.00	4*31P	60.00	62.00
4*12P	22.00	24.00	4*32P	62.00	64.00
4*13P	24.00	26.00	4*33P	64.00	66.00
4*14P	26.00	28.00	4*34P	66.00	68.00
4*15P	28.00	30.00	4*35P	68.00	70.00
4*16P	30.00	32.00	4*36P	70.00	72.00
4*17P	32.00	34.00	4*37P	72.00	74.00
4*18P	34.00	36.00	4*38P	74.00	76.00
4*19P	36.00	38.00	4*39P	76.00	78.00
4*20P	38.00	40.00	4*40P	78.00	80.00



PRODUCT NAME	DIM	TOL	DWG NO.	DRAW	Wu	PART NO	CUST
2.0 MM SINGLE ROW PIN HEADER SERIES	X. X	±0.4	P. W	CHECK	Tomy	UNIT	DATE
	X. XX	±0.25	MATER PA6T、BRASS	APPR	Allan	MM[INCH]	XXXX. XX. XX
	ANGLE	±3°	REV. AO	东莞市同盈电子有限公司 DONGGUAN WIN-WIN ELECTRONIC Co., Ltd.			