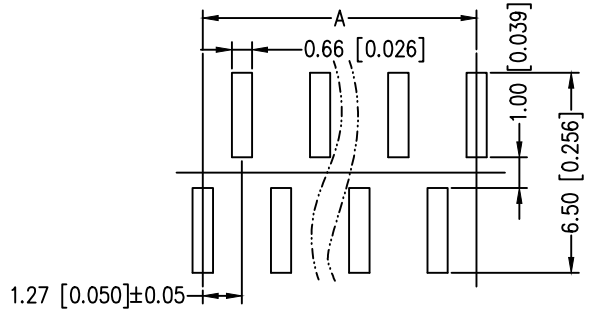
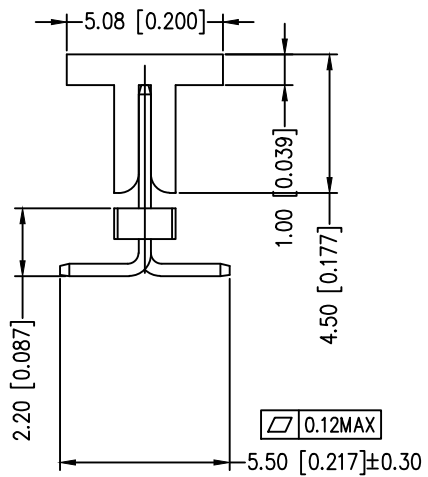
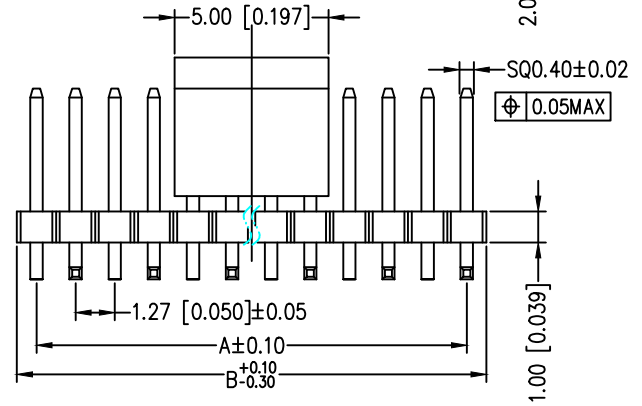
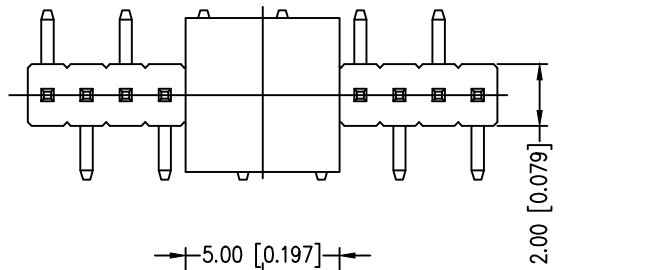




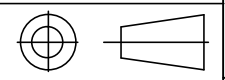
SPECIFICATIONS
 Current Rating: 1.0 AMP
 Contact Resistance: 20mΩ Max.
 Withstand Voltage: AC/DC 500V
 Insulator Resistance: 1000 MΩ Min
 Operating Temp.: -40°C ~ +105°C
 Contact Material: Brass
 Contact Plating: Au or Sn over Ni
 Insulator Material: PA6T Black+30%GF UL94V-0 BK



A TYPE Recommended P.C.B Layout

Any size and shape can be customized.
 Contact sales team for more information.

PIN Number	Dimension(mm)		PIN Number	Dimension(mm)	
	A	B		A	B
1x1P	1.27		1x20P	31.75	33.02
1x2P	1.27	2.54	1x27P	33.02	34.29
1x3P	2.54	3.81	1x28P	34.29	35.56
1x4P	3.81	5.08	1x29P	35.56	36.83
1x5P	5.08	6.35	1x30P	36.83	38.10
1x6P	6.35	7.62	1x31P	38.10	39.37
1x7P	7.62	8.89	1x32P	39.37	40.64
1x8P	8.89	10.16	1x33P	40.64	41.91
1x9P	10.16	11.43	1x34P	41.91	43.18
1x10P	11.43	12.70	1x35P	43.18	44.45
1x11P	12.70	13.97	1x36P	44.45	45.72
1x12P	13.97	15.24	1x37P	45.72	46.99
1x13P	15.24	16.51	1x38P	46.99	48.26
1x14P	16.51	17.78	1x39P	48.26	49.53
1x15P	17.78	19.05	1x40P	49.53	50.80
1x16P	19.05	20.32	1x41P	50.80	52.07
1x17P	20.32	21.59	1x42P	52.07	53.34
1x18P	21.59	22.86	1x43P	53.34	54.61
1x19P	22.86	24.13	1x44P	54.61	55.88
1x20P	24.13	25.40	1x45P	55.88	57.15
1x21P	25.40	26.67	1x46P	57.15	58.42
1x22P	26.67	27.94	1x47P	58.42	59.69
1x23P	27.94	29.21	1x48P	59.69	60.96
1x24P	29.21	30.48	1x49P	60.96	62.23
1x25P	30.48	31.75	1x50P	62.23	63.50



PRODUCT NAME		DIM	TOL	DWG NO.	DRAW	Wu	PART NO	CUST		
1.27 MM SINGLE ROW PIN HEADER SERIES		X. X	±0.4	P. W	CHECK	Tomy	UNIT	MM[INCH]	DATE XXXX.XX.XX	
		X. XX	±0.25	MATER PA6T、BRASS	APPR	Allan	东莞市同盈电子有限公司 DONGGUAN WIN-WIN ELECTRONIC Co.,Ltd.			
		ANGLE	±3°	REV. AO						