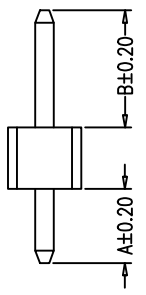
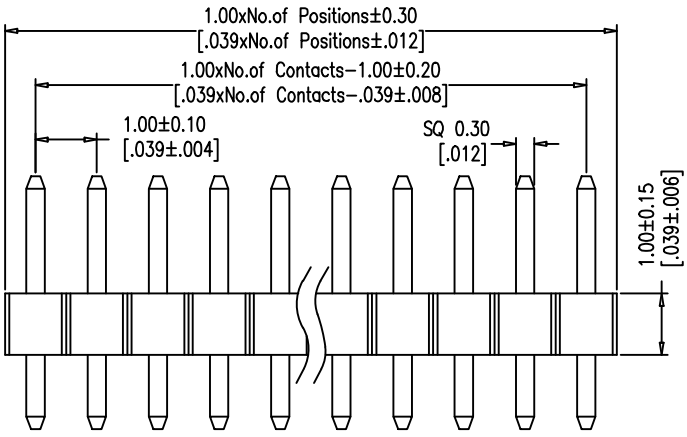
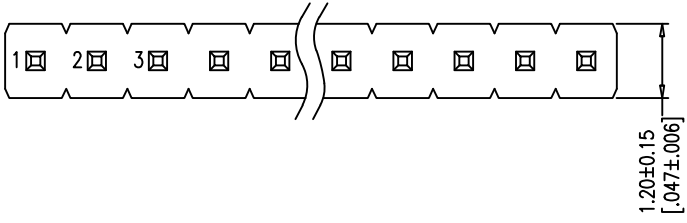




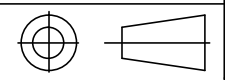
SPECIFICATIONS

Current Rating: 0.75 AMP
 Contact Resistance: 20mΩ Max.
 Withstand Voltage: AC/DC 500V
 Insulator Resistance: 1000 MΩ Min
 Operating Temp.: -40°C ~ +105°C
 Contact Material: Brass
 Contact Plating: Au or Sn over Ni
 Insulator Material: PA6T Black+30%GF UL94V-0 BK



Recommended P.C.B Layout (Top Side)
 (PCB BOARD TOLERANCE±0.05)

PIN Number	Dimension (mm)		PIN Number	Dimension (mm)	
	A	B		A	B
1*2P	1.00	2.00	1*27P	26.00	27.00
1*3P	2.00	3.00	1*28P	27.00	28.00
1*4P	3.00	4.00	1*29P	28.00	29.00
1*5P	4.00	5.00	1*30P	29.00	30.00
1*6P	5.00	6.00	1*31P	30.00	31.00
1*7P	6.00	7.00	1*32P	31.00	32.00
1*8P	7.00	8.00	1*33P	32.00	33.00
1*9P	8.00	9.00	1*34P	33.00	34.00
1*10P	9.00	10.00	1*35P	34.00	35.00
1*11P	10.00	11.00	1*36P	35.00	36.00
1*12P	11.00	12.00	1*37P	36.00	37.00
1*13P	12.00	13.00	1*38P	37.00	38.00
1*14P	13.00	14.00	1*39P	38.00	39.00
1*15P	14.00	15.00	1*40P	39.00	40.00
1*16P	15.00	16.00	1*41P	40.00	41.00
1*17P	16.00	17.00	1*42P	41.00	42.00
1*18P	17.00	18.00	1*43P	42.00	43.00
1*19P	18.00	19.00	1*44P	43.00	44.00
1*20P	19.00	20.00	1*45P	44.00	45.00
1*21P	20.00	21.00	1*46P	45.00	46.00
1*22P	21.00	22.00	1*47P	46.00	47.00
1*23P	22.00	23.00	1*48P	47.00	48.00
1*24P	23.00	24.00	1*49P	48.00	49.00
1*25P	24.00	25.00	1*50P	49.00	50.00
1*26P	25.00	26.00			



Any size and shape can be customized.
 Contact sales team for more information.

PRODUCT NAME	DIM	TOL	DWG NO.	DRAW	Wu	PART NO	CUST
1.0 MM SINGLE ROW PIN HEADER SERIES	X. X	±0.4	P. W	CHECK	Tomy	UNIT	DATE
	X. XX	±0.25	MATER	PA6T、BRASS	Allan	MM[INCH]	XXXX. XX. XX
	ANGLE	±3°	REV.	A0		东莞市同盈电子有限公司 DONGGUAN WIN-WIN ELECTRONIC Co.,Ltd.	