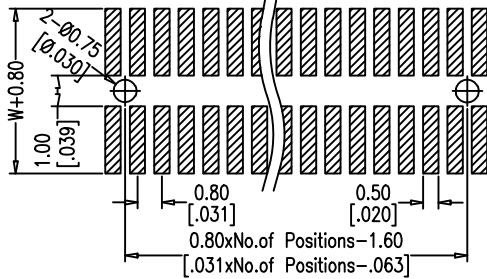
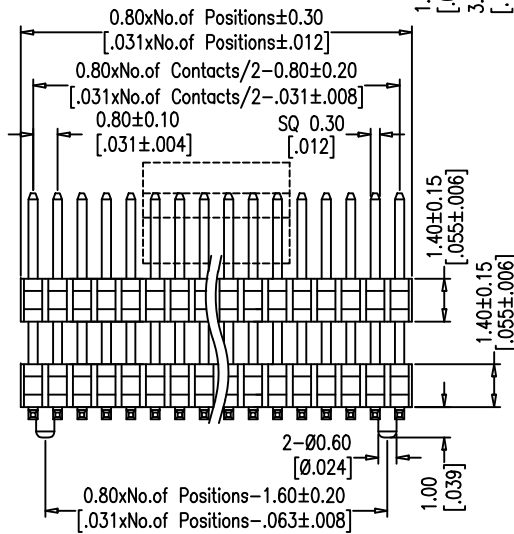
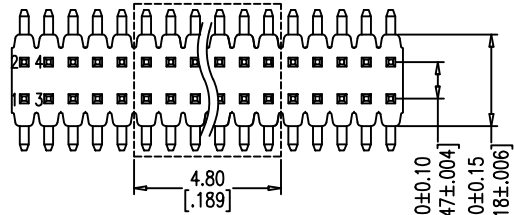


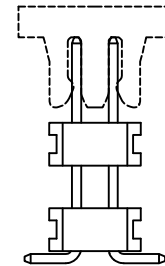
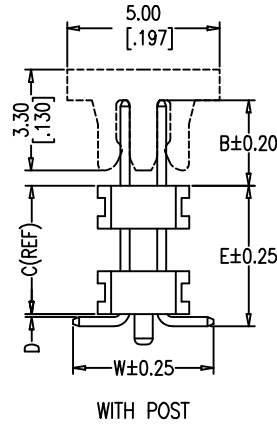


SPECIFICATIONS

Current Rating: 0.75 AMP
 Contact Resistance: 20mΩ Max.
 Withstand Voltage: AC/DC 500V
 Insulator Resistance: 1000 MΩ Min
 Operating Temp.: -40°C ~ +105°C
 Contact Material: Brass
 Contact Plating: Au or Sn over Ni
 Insulator Material: PA6T Black+30%GF UL94V-0 BK



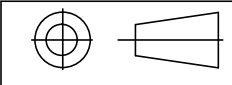
Recommended P. C. B Layout



W/O POST

PART NO.	Dimension (mm)		PART NO.	Dimension (mm)	
	A	B		A	B
2*1P	0.80	2*26P	20.00	20.80
2*2P	0.80	1.60	2*27P	20.80	21.60
2*3P	1.60	2.40	2*28P	21.60	22.40
2*4P	2.40	3.20	2*29P	22.40	23.20
2*5P	3.20	4.00	2*30P	23.20	24.00
2*6P	4.00	4.80	2*31P	24.00	24.80
2*7P	4.80	5.60	2*32P	24.80	25.60
2*8P	5.60	6.40	2*33P	25.60	26.40
2*9P	6.40	7.20	2*34P	26.40	27.20
2*10P	7.20	8.00	2*35P	27.20	28.00
2*11P	8.00	8.80	2*36P	28.00	28.80
2*12P	8.80	9.60	2*37P	28.80	29.60
2*13P	9.60	10.40	2*38P	29.60	30.40
2*14P	10.40	11.20	2*39P	30.40	31.20
2*15P	11.20	12.00	2*40P	31.20	32.00
2*16P	12.00	12.80	2*41P	32.00	32.80
2*17P	12.80	13.60	2*42P	32.80	33.60
2*18P	13.60	14.40	2*43P	33.60	34.40
2*19P	14.40	15.20	2*44P	34.40	35.20
2*20P	15.20	16.00	2*45P	35.20	36.00
2*21P	16.00	16.80	2*46P	36.00	36.80
2*22P	16.80	17.60	2*47P	36.80	37.60
2*23P	17.60	18.40	2*48P	37.60	38.40
2*24P	18.40	19.20	2*49P	38.40	39.20
2*25P	19.20	20.00	2*50P	39.20	40.00

Any size and shape can be customized.
 Contact sales team for more information.



PRODUCT NAME	DIM	TOL	DWG NO.	DRAW	Wu	PART NO	CUST
O. 8MM DOUBLE ROW SERIES PIN HEADER	X. X	±0.4	P. W	CHECK	Tomy	UNIT	DATE
	X. XX	±0.25	MATER	PA6T、BRASS	Allan	MM [INCH]	XXXX. XX. XX
	ANGLE	±3°	REV.	A0		东莞市同盈电子有限公司 DONGGUAN WIN-WIN ELECTRONIC Co., Ltd.	