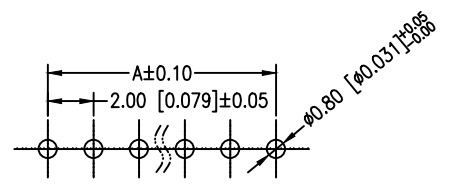
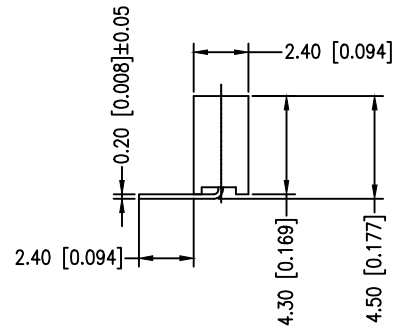
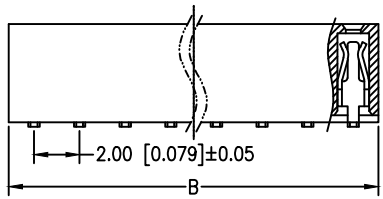
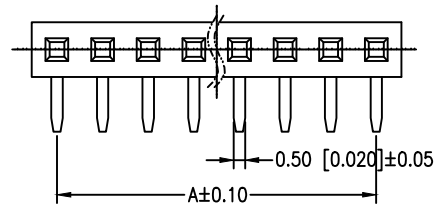




SPECIFICATIONS

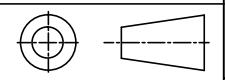
Current Rating: 2.0 AMP
 Contact Resistance: 20mΩ Max.
 Withstand Voltage: AC/DC 500V
 Insulator Resistance: 1000 MΩ Min
 Operating Temp.: -40°C ~ +105°C
 Contact Material: Brass
 Contact Plating: Au or Sn over Ni
 Insulator Material: PA6T Black+30%GF UL94V-0 BK



Recommended P.C.B Layout

Any size and shape can be customized.
 Contact sales team for more information.

PIN Number	Dimension (mm)		PIN Number	Dimension (mm)	
	A	B		A	B
1*2P	2.00	4.60	1*21P	40.00	42.60
1*3P	4.00	6.60	1*22P	42.00	44.60
1*4P	6.00	8.60	1*23P	44.00	46.60
1*5P	8.00	10.60	1*24P	46.00	48.60
1*6P	10.00	12.60	1*25P	48.00	50.60
1*7P	12.00	14.60	1*26P	50.00	52.60
1*8P	14.00	16.60	1*27P	52.00	54.60
1*9P	16.00	18.60	1*28P	54.00	56.60
1*10P	18.00	20.60	1*29P	56.00	58.60
1*11P	20.00	22.60	1*30P	58.00	60.60
1*12P	22.00	24.60	1*31P	60.00	62.60
1*13P	24.00	26.60	1*32P	62.00	64.60
1*14P	26.00	28.60	1*33P	64.00	66.60
1*15P	28.00	30.60	1*34P	66.00	68.60
1*16P	30.00	32.60	1*35P	68.00	70.60
1*17P	32.00	34.60	1*36P	70.00	72.60
1*18P	34.00	36.60	1*37P	72.00	74.60
1*19P	36.00	38.60	1*38P	74.00	76.60
1*20P	38.00	40.60	1*39P	76.00	78.60
			1*40P	78.00	80.60



PRODUCT NAME	DIM	TOL	DWG NO.	DRAW	Wu	PART NO	CUST
2.0 MM FEMALE HEADER SERIES	X. X	±0.4	P. W	CHECK	Tomy	UNIT	DATE
	X. XX	±0.25	MATER PA6T、BRASS	APPR	Allan	MM[INCH]	XXXX. XX. XX
	ANGLE	±3°	REV. AO	东莞市同盈电子有限公司 DONGGUAN WIN-WIN ELECTRONIC Co.,Ltd.			