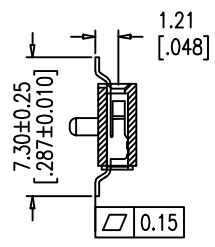
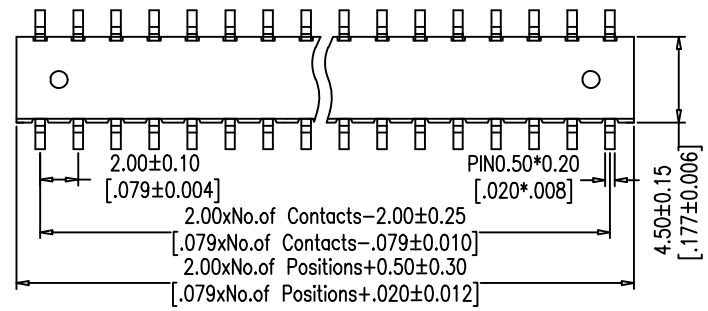
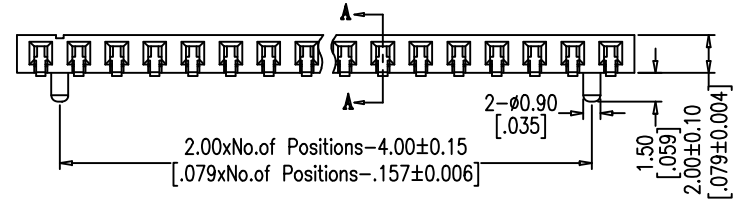


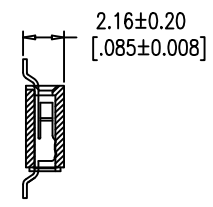


SPECIFICATIONS

Current Rating: 2.0 AMP
 Contact Resistance: 20mΩ Max.
 Withstand Voltage: AC/DC 500V
 Insulator Resistance: 1000 MΩ Min
 Operating Temp.: -40°C ~ +105°C
 Contact Material: Brass
 Contact Plating: Au or Sn over Ni
 Insulator Material: PA6T Black+30%GF UL94V-0 BK

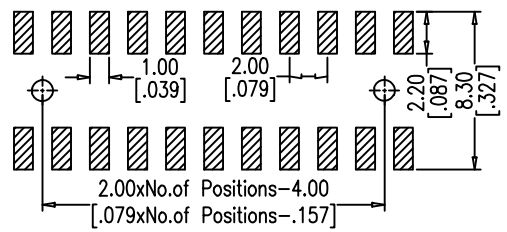


TYPE 2 WITH POST
SECTION A-A



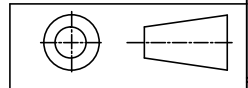
TYPE 1:W/O POST

PIN Number	Dimension(mm)			PIN Number	Dimension(mm)		
	A	B	C		A	B	C
2X2P	2.00	4.40		2X22P	42.00	44.40	40.00
2X3P	4.00	6.40	2.00	2X23P	44.00	46.40	42.00
2X4P	6.00	8.40	4.00	2X24P	46.00	48.40	44.00
2X5P	8.00	10.40	6.00	2X25P	48.00	50.40	46.00
2X6P	10.00	12.40	8.00	2X26P	50.00	52.40	48.00
2X7P	12.00	14.40	10.00	2X27P	52.00	54.40	50.00
2X8P	14.00	16.40	12.00	2X28P	54.00	56.40	52.00
2X9P	16.00	18.40	14.00	2X29P	56.00	58.40	54.00
2X10P	18.00	20.40	16.00	2X30P	58.00	60.40	56.00
2X11P	20.00	22.40	18.00	2X31P	60.00	62.40	58.00
2X12P	22.00	24.40	20.00	2X32P	62.00	64.40	60.00
2X13P	24.00	26.40	22.00	2X33P	64.00	66.40	62.00
2X14P	26.00	28.40	24.00	2X34P	66.00	68.40	64.00
2X15P	28.00	30.40	26.00	2X35P	68.00	70.40	66.00
2X16P	30.00	32.40	28.00	2X36P	70.00	72.40	68.00
2X17P	32.00	34.40	30.00	2X37P	72.00	74.40	70.00
2X18P	34.00	36.40	32.00	2X38P	74.00	76.40	72.00
2X19P	36.00	38.40	34.00	2X39P	76.00	78.40	74.00
2X20P	38.00	40.40	36.00	2X40P	78.00	80.40	76.00
2X21P	40.00	42.40	38.00				



Recommended P.C.B Layout (Top Side)
(PCB BOARD TOLERANCE ±0.05)

Any size and shape can be customized.
 Contact sales team for more information.



PRODUCT NAME	DIM	TOL	DWG NO.	DRAW	Wu	PART NO	CUST
2.0 MM FEMALE HEADER SERIES	X. X	±0.4	P. W	CHECK	Tomy	UNIT	DATE
	X. XX	±0.25	MATER PA6T、BRASS	APPR	Allan	MM[INCH]	XXXX. XX. XX
	ANGLE	±3°	REV. AO	东莞市同盈电子有限公司 DONGGUAN WIN-WIN ELECTRONIC Co., Ltd.			