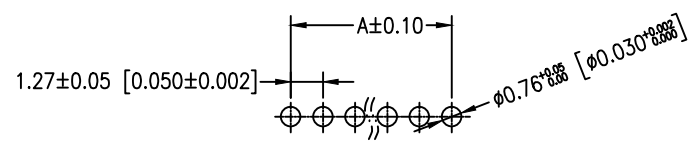
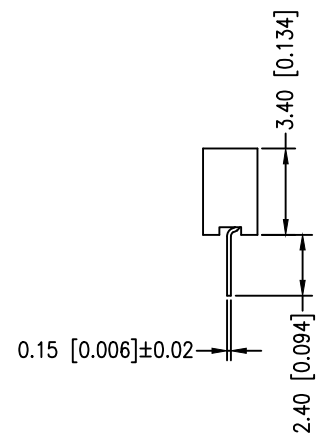
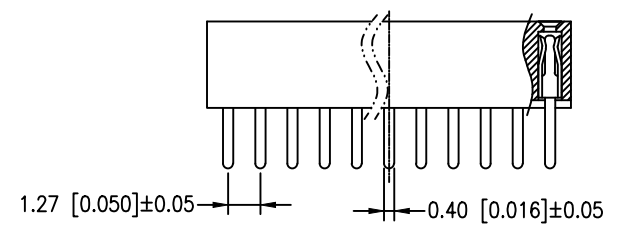
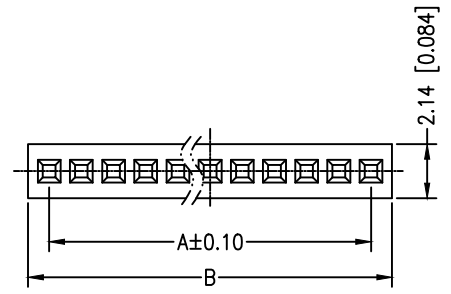




**SPECIFICATIONS**

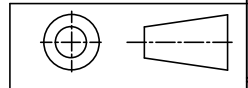
Current Rating: 1.0 AMP  
 Contact Resistance: 20mΩ Max.  
 Withstand Voltage: AC/DC 500V  
 Insulator Resistance: 1000 MΩ Min  
 Operating Temp.: -40°C ~ +105°C  
 Contact Material: Brass  
 Contact Plating: Au or Sn over Ni  
 Insulator Material: PA6T Black+30%GF UL94V-0 BK



PIN Number	Dimension(mm)		PIN Number	Dimension(mm)	
	A	B		A	B
1*2P	1.27	2.94	1*27P	33.02	34.69
1*3P	2.54	4.21	1*28P	34.29	35.96
1*4P	3.81	5.48	1*29P	35.56	37.23
1*5P	5.08	6.75	1*30P	36.83	38.50
1*6P	6.35	8.02	1*31P	38.10	39.77
1*7P	7.62	9.29	1*32P	39.37	41.04
1*8P	8.89	10.56	1*33P	40.64	42.31
1*9P	10.16	11.83	1*34P	41.91	43.58
1*10P	11.43	13.10	1*35P	43.18	44.85
1*11P	12.70	14.37	1*36P	44.45	46.12
1*12P	13.97	15.64	1*37P	45.72	47.39
1*13P	15.24	16.91	1*38P	46.99	48.66
1*14P	16.51	18.18	1*39P	48.26	49.93
1*15P	17.78	19.45	1*40P	49.53	51.20
1*16P	19.05	20.72	1*41P	50.80	52.47
1*17P	20.32	21.99	1*42P	52.07	53.74
1*18P	21.59	23.26	1*43P	53.34	55.01
1*19P	22.86	24.53	1*44P	54.61	56.28
1*20P	24.13	25.80	1*45P	55.88	57.55
1*21P	25.40	27.07	1*46P	57.15	58.82
1*22P	26.67	28.34	1*47P	58.42	60.09
1*23P	27.94	29.61	1*48P	59.69	61.36
1*24P	29.21	30.88	1*49P	60.96	62.63
1*25P	30.48	32.15	1*50P	62.23	63.90
1*26P	31.75	33.42			

**Recommended P.C.B Layout**

Any size and shape can be customized.  
 Contact sales team for more information.



PRODUCT NAME	DIM	TOL	DWG NO.	DRAW	Wu	PART NO	CUST
1.27 MM FEMALE HEADER SERIES	X.X	±0.4	P.W	CHECK	Tomy	UNIT	DATE
	X.XX	±0.25	MATER PA6T、BRASS	APPR	Allan	MM[INCH]	XXXX.XX.XX
	ANGLE	±3°	REV. A0				

